

Appendix A

Major Ion Chemistry

Charts Detailing the Results of Cation and Anion Surface Water Sampling

- 1a. Domino Estate
- 2a. Duck Creek
- 3a. Maple Cleaners Monitor Well
- 4a. Duck Creek below Mountain Vista
- 5a. Flamingo Wash below Lamb overpass
- 6a. Flamingo Wash above Nellis overpass
- 7a. Borehole adjacent to Flamingo Wash near Nellis
- 8a. Sloan channel below Charleston overpass
- 9a. Sloan channel above Orchard Area Conveyance
- 10a. Borehole adjacent to Sloan channel between Charleston and Orchard Area Conveyance

Domino Estate

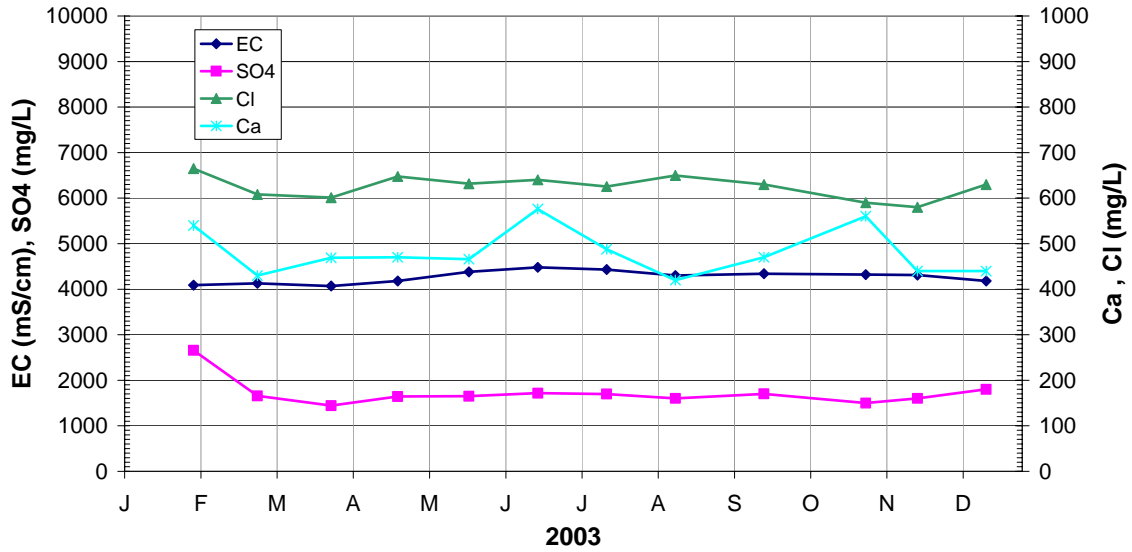


Figure 1a. Chart detailing the results of cation and anion sampling at the Domino Estate.

Duck Creek Apartment Bridge

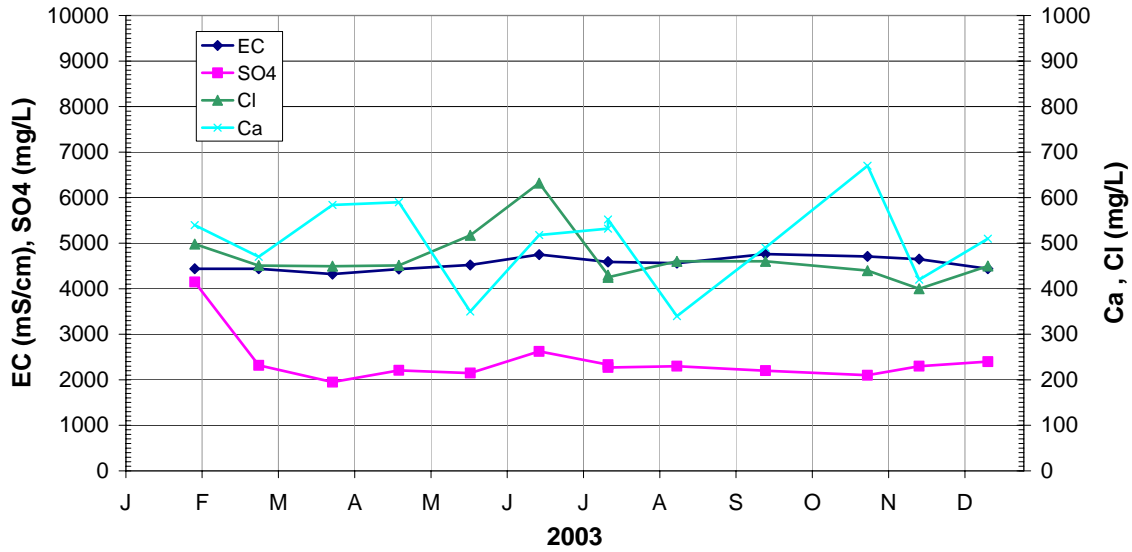


Figure 2a. Chart detailing the results of cation and anion surface water sampling at Duck Creek near the apartment bridge.

Maple Cleaners Monitor Well (MW-2)

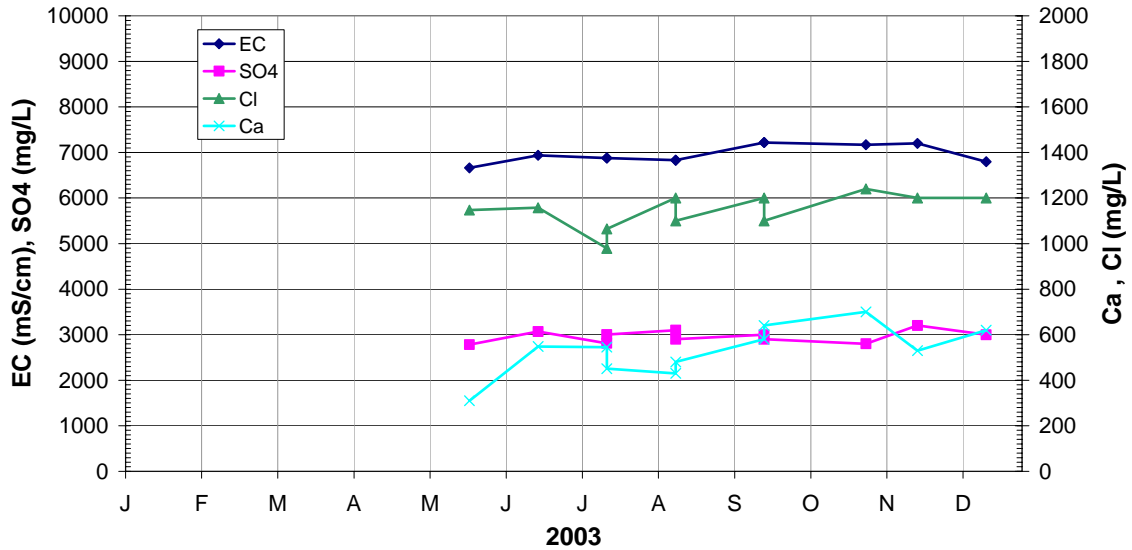


Figure 3a. Chart detailing the results of cation and anion groundwater sampling at the Maple Cleaners Monitor Well (MW-2).

Duck Creek at Mountain Vista

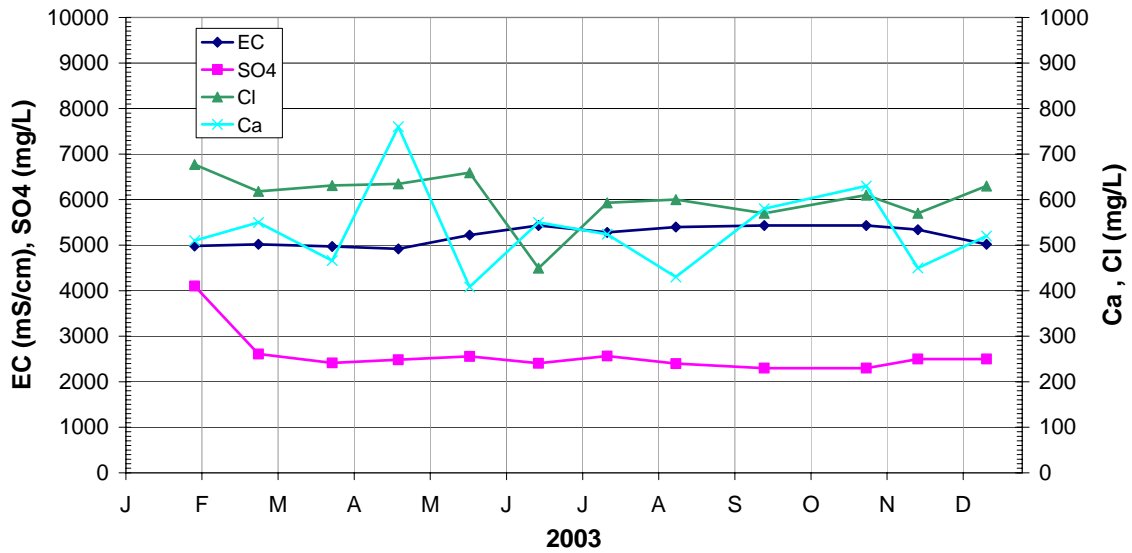


Figure 4a. Chart detailing the results of cation and anion surface water sampling at Duck Creek below the Mountain Vista bridge.

Flamingo Wash at Lamb

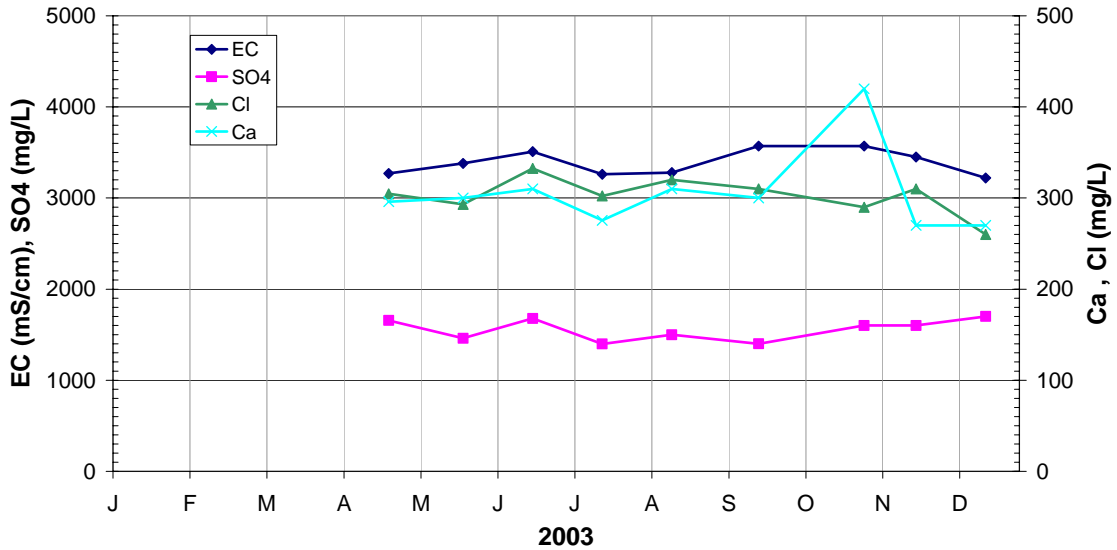


Figure 5a. Chart detailing the results of cation and anion surface water sampling of Flamingo Wash below the Lamb overpass.

Flamingo Wash at Nellis

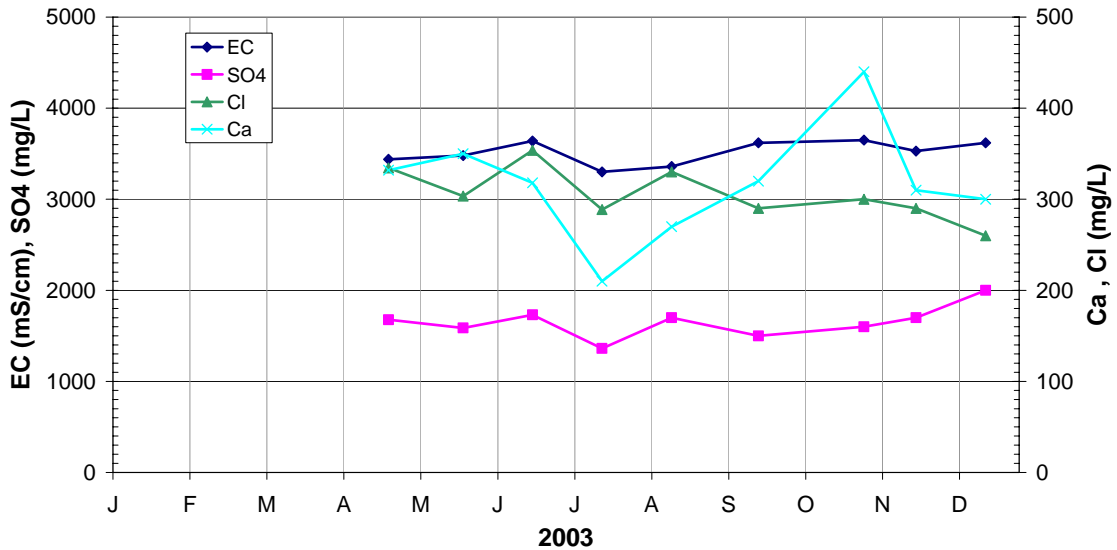


Figure 6a. Chart detailing the results of cation and anion surface water sampling of Flamingo Wash above the Nellis overpass.

Borehole at Flamingo and Nellis

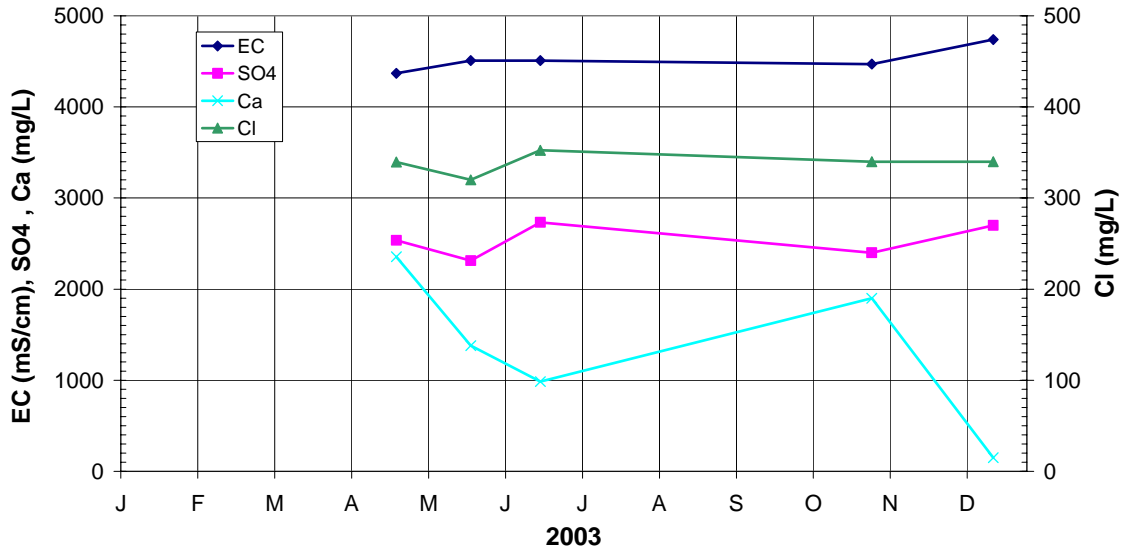


Figure 7a. Chart detailing the results of cation and anion groundwater sampling of the borehole adjacent to Flamingo Wash near Nellis.

Sloan Channel at Charleston

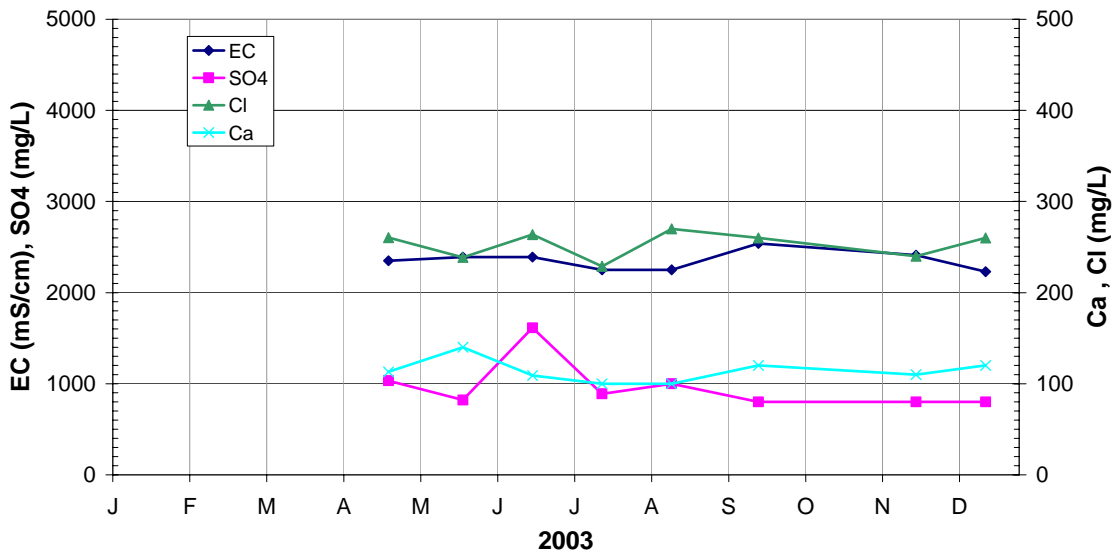


Figure 8a. Chart detailing the results of cation and anion surface water sampling of Sloan Channel below the Charleston overpass.

Sloan Channel at the Orchard Area Conveyance

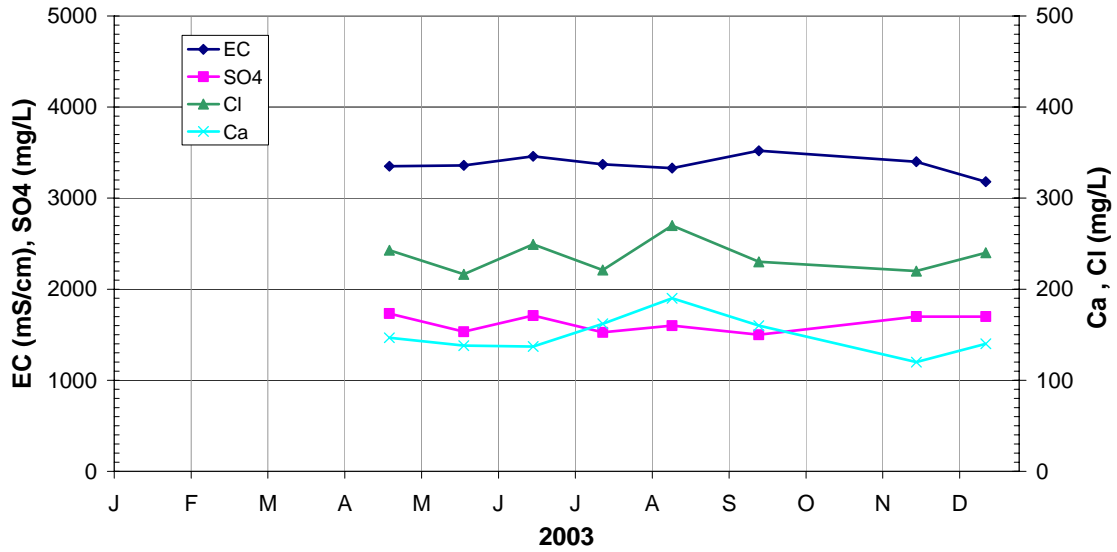


Figure 9a. Chart detailing the results of cation and anion surface water sampling of Sloan Channel above the Orchard Area Conveyance.

Borehole Near Sloan Channel

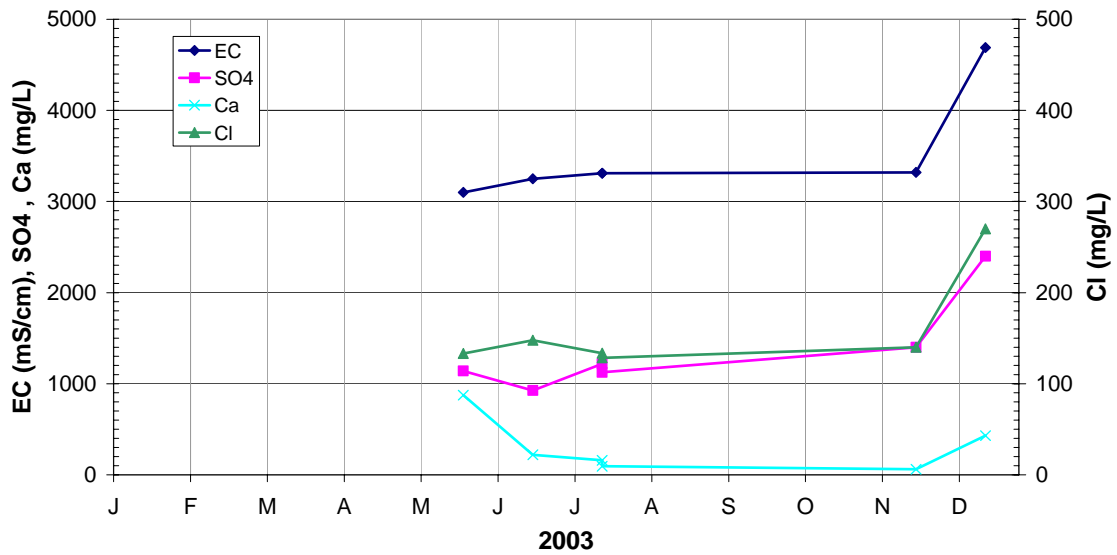


Figure 10a. Chart detailing the results of cation and anion groundwater sampling of the borehole adjacent to Sloan channel between Charleston and the Orchard Area Conveyance.